

AI is evolutionary

AI's Global Economic Impact

Powering trillions in value creation

Investments in AI solutions and services
to yield a global cumulative impact of

\$22.3 trillion

by 2030, approximately

3.7% of the global GDP

IDC, Global AI Economic Impact, Apr 2025



Agentic AI



Customer service

Coding assistant



Patient care



Physical AI



Autonomous vehicles

Lab automation



Edge

IDC Marketscape: Worldwide Private AI Infrastructure Systems 2025 Vendor Assessment (August 2025)

HPE is the clear leader.

“As AI innovation accelerates, private AI infrastructure systems are emerging as important options for customers that want faster deployment of complete, optimized, fit-for-purpose stacks in dedicated on premises or collocated facilities.”

-Mary Johnston Turner
 IDC Research VP, Digital Infrastructure Strategies
 WW Infrastructure Research

Source: [IDC MarketScape: Worldwide Private AI Infrastructure Systems 2025 Vendor Assessment](#)



Why is scaling your pilot so challenging?



Scale

Growing computational demand

Exploding data volumes



Complexity

Gaps in specialized expertise

Slower ROI



Cost

Inference at massive scale

Spiraling cloud costs



Data

Data sovereignty and privacy

Ensuring regulatory compliance



Security

Risks of exfiltration or IP leakage

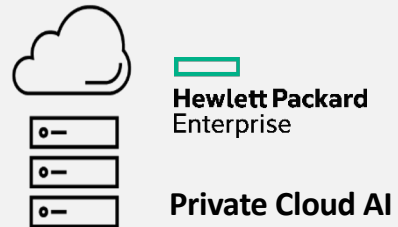
Ensuring AI governance

Requirements for Building Gen AI Solutions

Training Data



Accelerated Computing



Training and Inference Tools

Data Curation



Foundations Models



Training & Customization

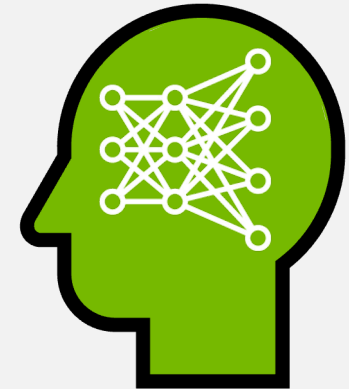


Accelerated Inference



AI Expertise

Internal Expertise
Solution Delivery Partners
Reseller Partners



NVIDIA AI Computing by HPE

Co-developed solutions to simplify enterprise AI

Turnkey Private Cloud

AI Services & Training

AI Optimized Systems

Enterprise-grade Control

PEOPLE

TECHNOLOGY

ECONOMICS

Inference, Tuning & Training

Virtual Assistants

Process Automation

Content & Product Creation



Hewlett Packard
Enterprise



←.....HPE Private Cloud AI.....→

Start fast



AI in the Box

2 NVIDIA L40s GPU's
960GB Integrated
Customer Network

***Thailand market only



Developer system

2 NVIDIA H100 NVL GPU's
32 TB Integrated
Customer Network
Up to 2.2 kW



Small

8 NVIDIA RTX Pro 6000
GPU's
109 TB
400GbE NVIDIA Networking
up to 12 kW rack



Medium

8 NVIDIA H200 GPUs
109 TB
400GbE NVIDIA Networking
up to 13 kW



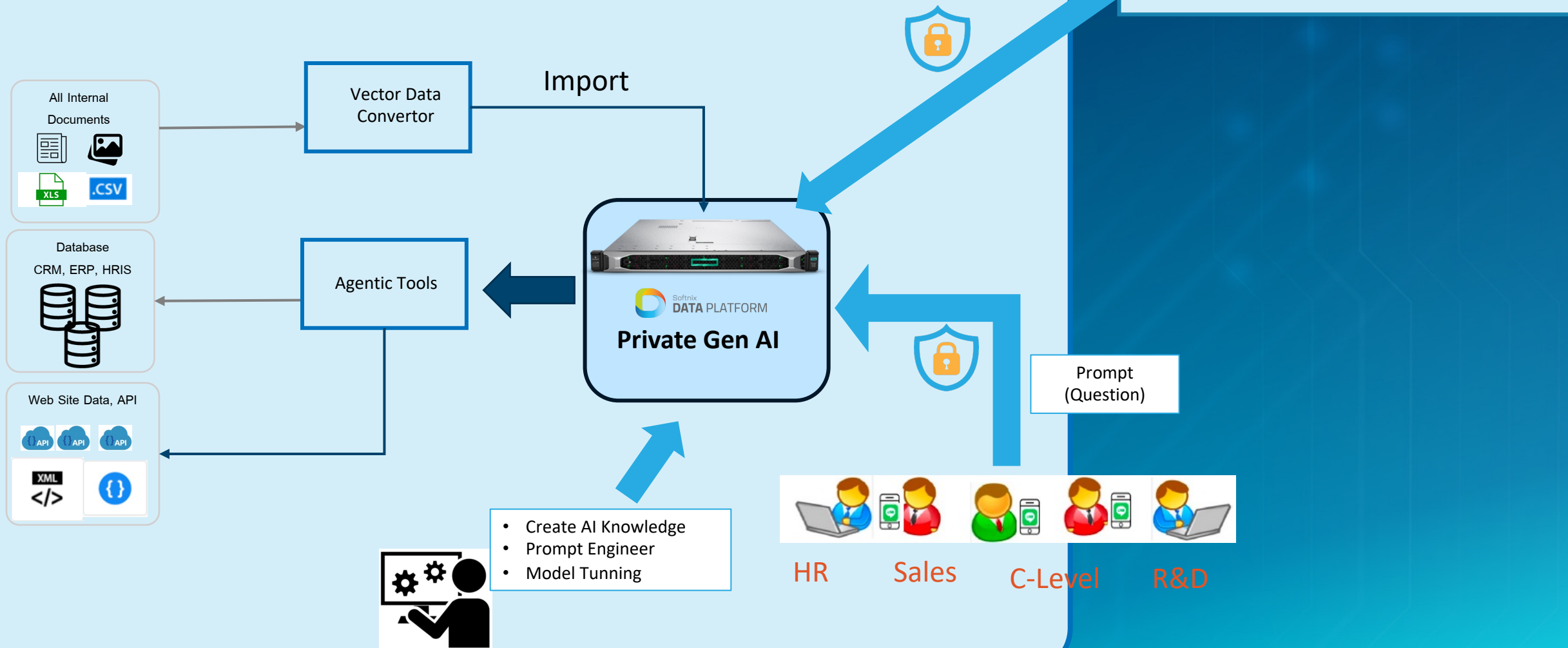
Large

16 NVIDIA H200 GPUs
217 TB
400GbE NVIDIA Networking
up to 17.4 kW



How does AI in the Box work?

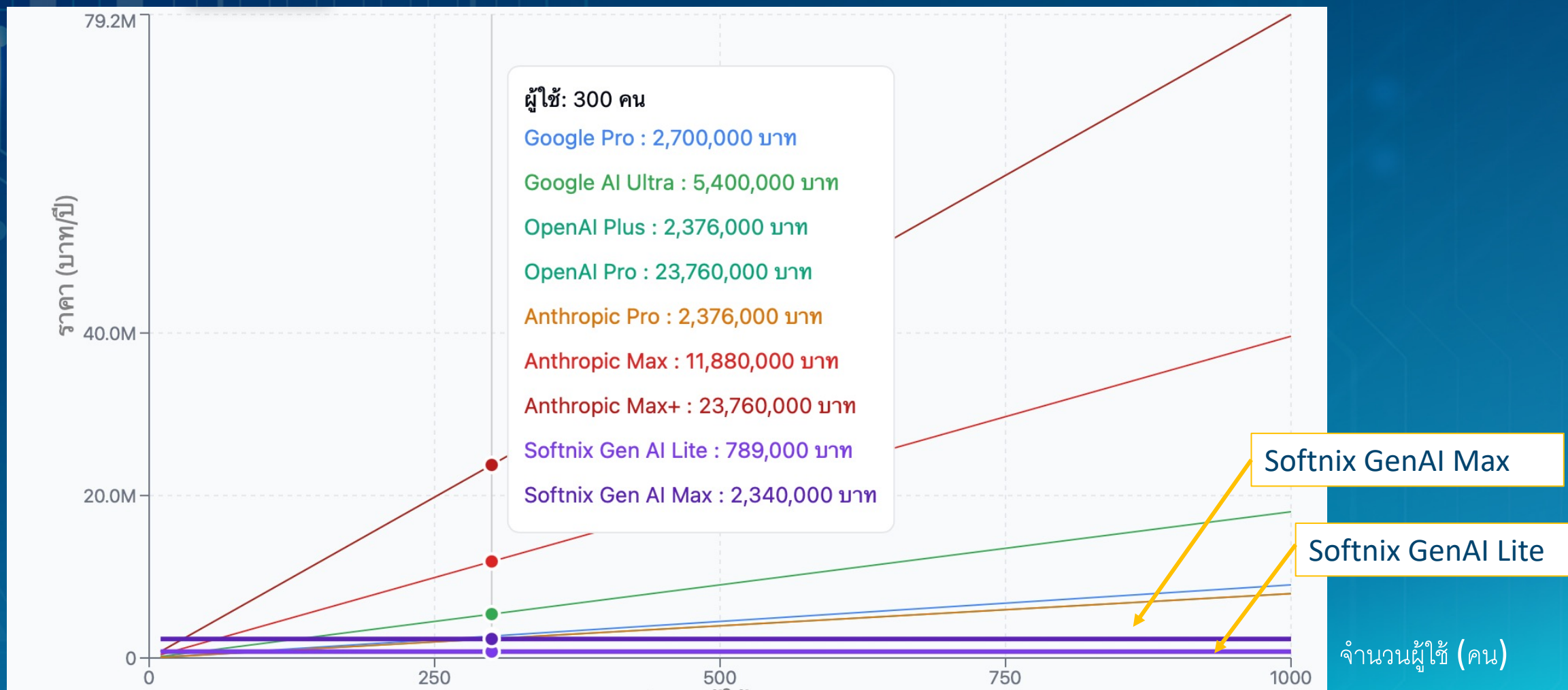
On Premise or Private Cloud



Tokens Pricing Market

Provider	Plan	Price (USD) per 1M tokens	Key Features
OpenAI	Free	\$0/month	GPT-3.5 access
	Plus	\$20/month	GPT-4 access, faster responses
	Pro	\$200/month	GPT-4.5, GPT-4o, advanced voice features
Google	Pro	750฿/month	Gemini 2.5 Pro
	AI Ultra	฿1500/month	Gemini 2.5 Pro, All
Anthropic	Free	\$0/month	Limited access to Claude 3 Sonnet
	Pro	\$20/month	Access to Claude 3 Opus, increased usage
	Max	\$100/month	5x Pro usage limits
	Max+	\$200/month	20x Pro usage limits, priority feature access
Softnix GenAI	Lite	789,000 Baht	(100 users up / 588 baht/month)
	Max	2,340,000 Baht	(300 users up/688 baht)

Tokens Pricing Market



HPE is committed to building out use cases leveraging **Solution Accelerators**



Prebuilt use cases & attached services help enterprises accelerate AI adoption

Virtual Assistants

- Chatbots/Q&A
- Code generation
- Content summarization

Automation

- Task & workflow automation
- Corporate AI governance processes
- AI-driven event & incident management

Content and Product Creation

- Sales & marketing
- Internal communication & knowledge management
- AI driven product dev & prototyping

Financial Services

Public Sector

Retail

Telco

Healthcare

Life Sciences



Thank you

